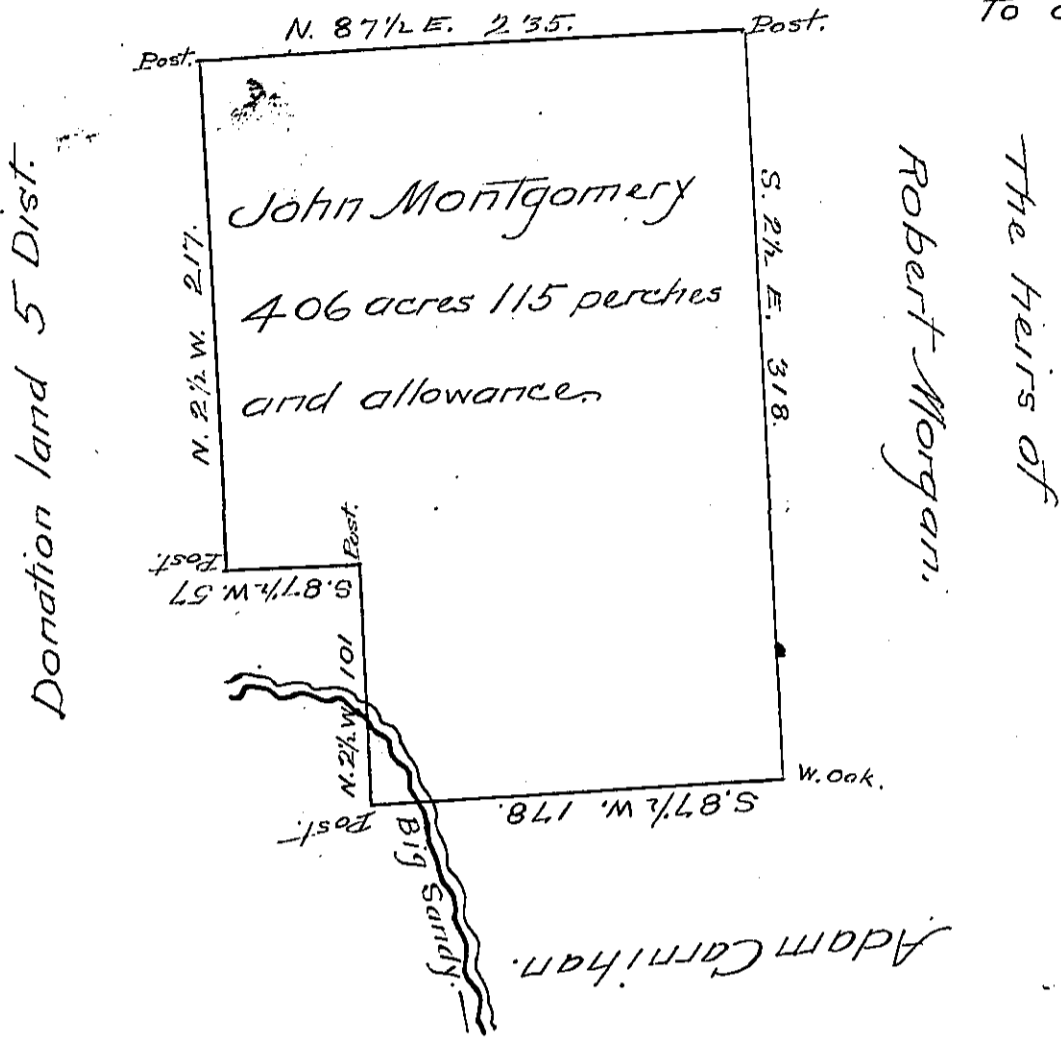


James Montgomery & Lewis Dilly.

Scale 100 perches
To an Inch.



Situate in French Creek Township Mercer
County Surveyed the 21st of September 1837 on a
Warrant granted to John Montgomery Dated the
11th July 1820 Containing 406 acres 115 perches
and usual allowance

B. Alexander D.S.

John Taylor Esq. S. G.

IN TESTIMONY that the above is a copy of the original remaining on file in
the Department of Internal Affairs of Pennsylvania, made
conformably to an Act of Assembly approved the 16th day of
February, 1833, I have hereunto set my Hand and caused
the Seal of said Department to be affixed at Harrisburg,
this Sixteenth day of February 1906.

George R. Brown
Secretary of Internal Affairs.